



# NBX<sup>®</sup> 100 MEMORY UPGRADE

The following are instructions for upgrading the Network Call Processor for an NBX 100 Communications System from 32 Mb of RAM to 64 Mb. If you add another 32 Mb memory card to the Network Call Processor card, the system will be able to support the maximum system capacity of 200 devices.

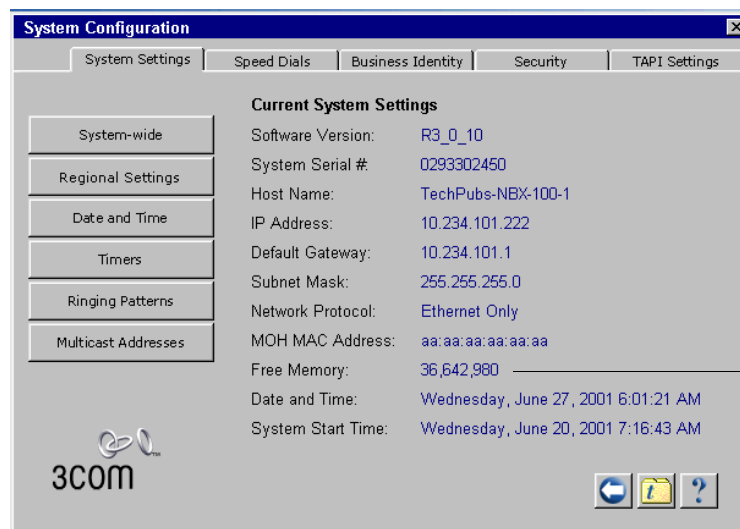
For example: The memory upgrade is required for a system that has more than 36 Central Office lines or 80 NBX telephones and is running with Release 2.0 software or higher.

## Before Adding an Additional Memory Card

Before you install the additional memory card, make a note of the system's current free memory using the NetSet utility so that you can verify that the upgrade was successful when complete. Note the system's current free memory as follows:

- 1 Log on to the NetSet utility using the administrator login ID and password.
- 2 In the *NBX NetSet - Main Menu* window, click *System Configuration*.
- 3 Click the *System Settings* tab, and make a note of the current free memory (see Figure 1).

Figure 1 System Settings Tab



Make a note of the system's current free memory before installing the new memory card.

## Installation

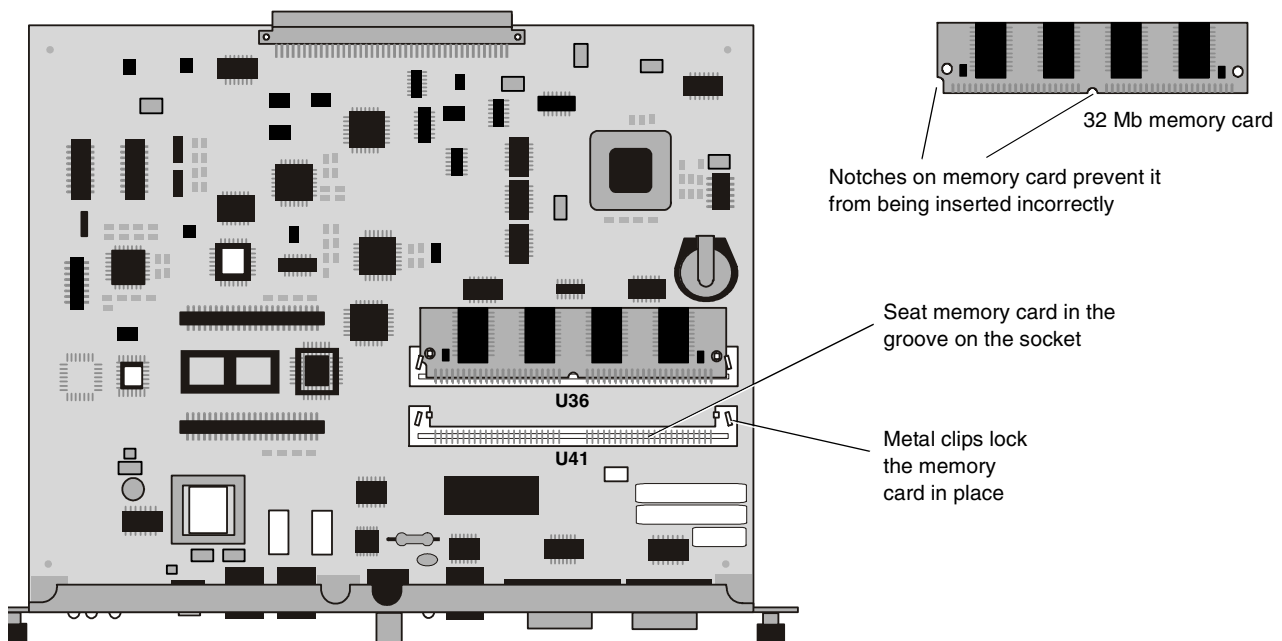
Install the additional memory card into the NCP as follows:

- 1 In the *NBX NetSet - Main Menu* window, click *Operations*.
- 2 Click the *Reboot/Shutdown* tab.
- 3 Click the *Shutdown* button.
- 4 Unplug the chassis power cord.



**CAUTION!** To protect against damage from static discharge, always wear an ESD grounding strap when you handle the NCP and the memory card.

**Figure 2** NCP Circuit Board — Top View



- 5 To remove the Network Call Processor card from the chassis, loosen the thumb screws and slide the card forward.
- 6 To insert the new memory card into the empty socket seat the memory card into the groove on the socket, recline it into place, and then lock it in with the small metal clips on either side of the socket.

If the existing memory card is in the front socket (U41), you may want to remove it to allow access to the back socket (U36). If you do so, remember to reinstall the the original memory card.



**Note:** Both memory cards are identical.

- 7 Carefully reinstall the NCP card into the chassis in the second slot from the top.
- 8 Plug in the power cord to reboot the system.
- 9 Upgrade the system software to Release 2.0 or a later release, if it has not already been upgraded.

When the system has completed the reboot process, use the NetSet utility to verify the memory upgrade by noting a 32 Mb increase in the free memory.